

TALARRUBIAS
PARISH CHURCH OF SANTA CATALINA DE ALEJANDRÍA
PLAZA DE ESPAÑA, 1 – 06640 TALARRUBIAS (BADAJOZ)

DESCRIPTION

The Parish Church of Santa Catalina de Alejandría is located in Plaza de España in Talarrubias, constituting the town's principal religious landmark and one of its most outstanding heritage elements. Its imposing presence in the urban centre reflects its historical role as the axis of the town's social and spiritual life, fully integrated within the architectural ensemble of the square.

HISTORY

Construction of the church began at the end of the 15th century and continued throughout the 16th century, with later interventions and additions shaping its current appearance.

Throughout its history, the church has undergone various conservation works, notably those carried out between 1998 and 1999 focused on roof refurbishment, as well as the interventions of 2000 and 2001 aimed at improving the flooring and interior of the building.

HISTORICAL AND ARTISTIC DESCRIPTION

The church is a detached single-storey building, except for the choir located at the foot of the nave and a room on the first floor above the sacristy. It presents a notable combination of architectural styles resulting from its prolonged construction process.

It has a total built ground-floor area of 901 square metres, an approximate total length of 45 metres and a width of 22.60 metres. The height from the level of the square to the central roof ridge is 14.30 metres and 9.70 metres to the cornice of the side nave. The tower reaches a height of 31 metres up to the base of the weather vane and cross.

The structure is fundamentally Gothic, visible in the spatial organisation and overall conception of the building. Added to this are Renaissance elements, such as the corbels supporting the cornice and the buttresses, together with Mudéjar features visible in the use of the alfiz around the arches, the superimposition of sections and the arrangement of openings in the tower.

The ensemble is completed with Baroque interventions, especially in the final phase of construction of the bell tower, which became the most prominent element of the building's silhouette.

The church is built of stone and brick, traditional materials that reinforce its monumental character and integration into the local architecture.

NOTABLE FIGURES RELATED TO THE POI

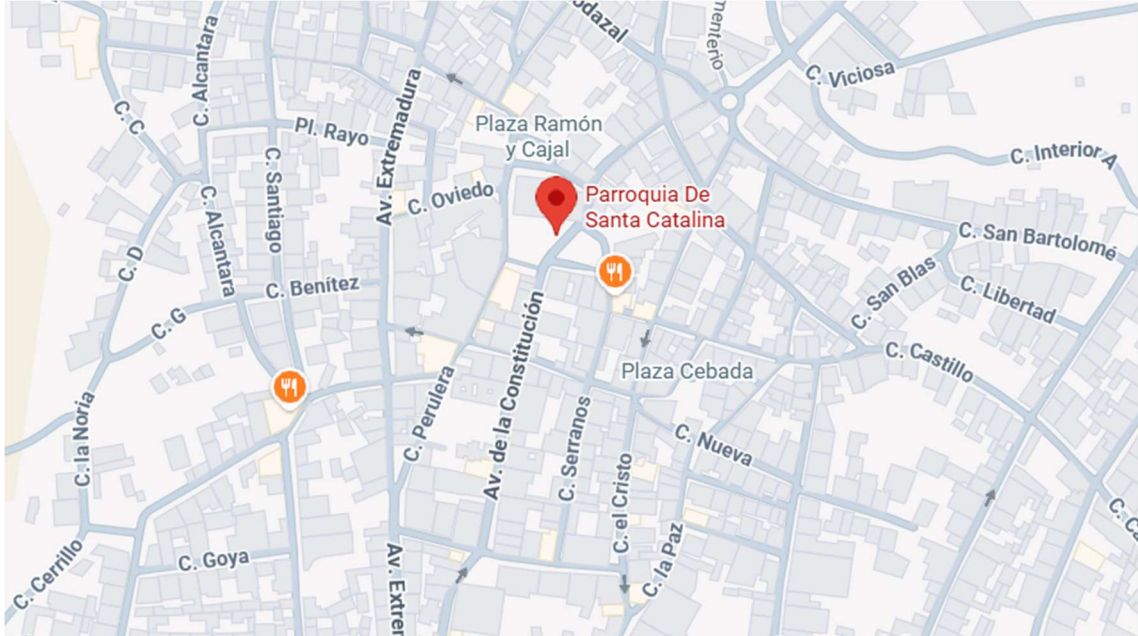
Catherine of Alexandria was a 4th-century Christian martyr, renowned for her wisdom and steadfast defense of the faith. Her feast day is celebrated on November 25. Her cult spread throughout Europe from the 6th century onward, reaching particular prominence between the 10th and 12th centuries. She is included among the Fourteen Holy Helpers and is traditionally invoked against sudden death, as well as regarded as the patron saint of philosophers, students, and those devoted to study. The dedication of the church to Saint Catherine links Talarrubias to one of the most widespread devotions of medieval European Christianity.

INTANGIBLE HERITAGE

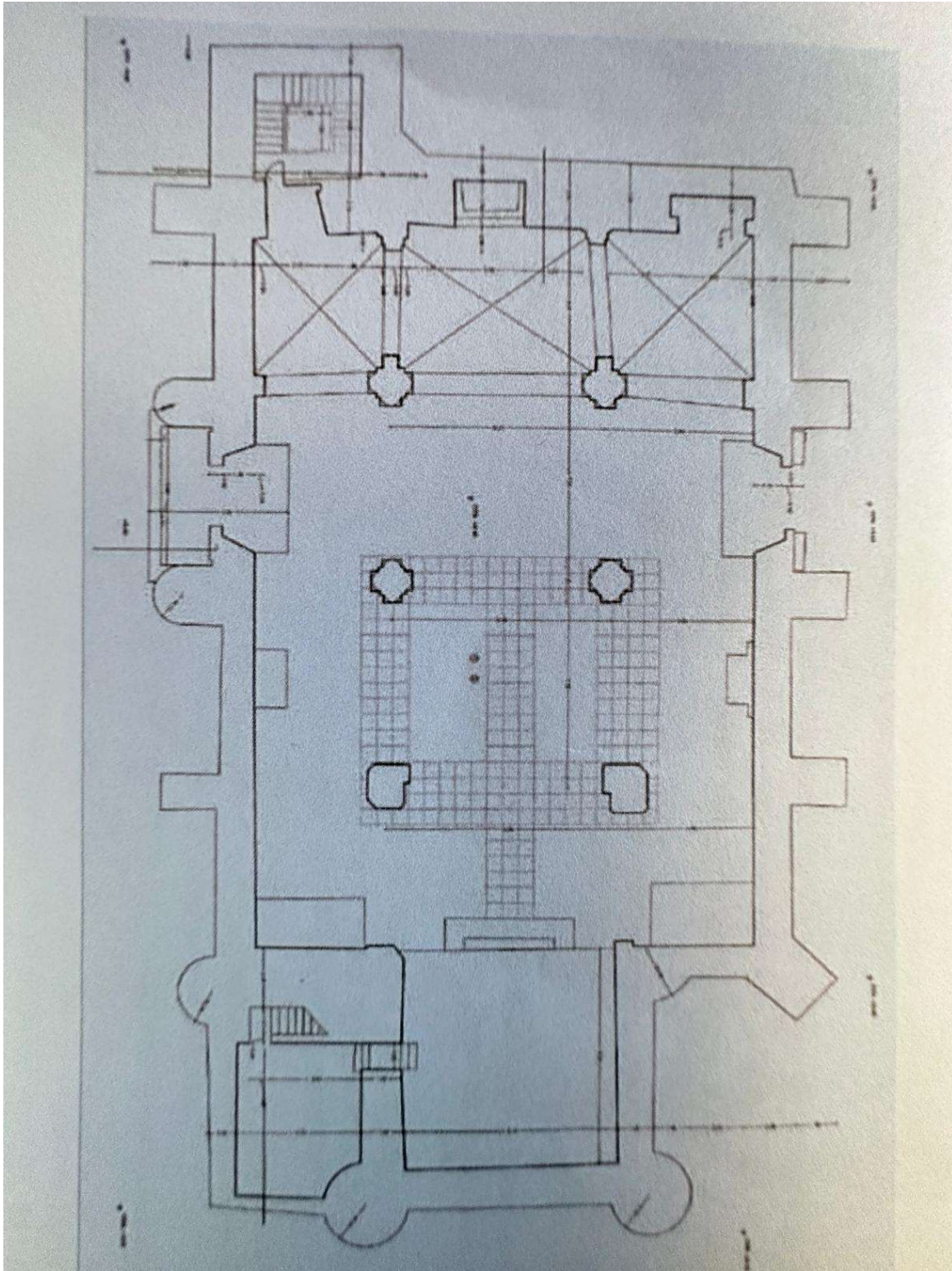
The church constitutes the principal space for religious celebration in Talarrubias, keeping alive the community's liturgical tradition and devotional practices.

Likewise, the building is linked to elements of popular tradition and collective memory, such as stories related to the bells or the frequent presence of storks on the tower, which form part of the local imagination.

LOCATION MAP



FLOOR PLAN



GRAPHIC DOCUMENTATION



The church is built of stone and brick, traditional materials that reinforce its monumental character.

© ARZOBISPADO DE TOLEDO. TOLEDO. ESPAÑA



The tower has a height of 31 meters up to the base of the weather vane and the cross. © ARZOBISPADO DE TOLEDO. TOLEDO.
ESPAÑA



Detail of the bell gable crowning the parish church, with a single bell.. © ARZOBISPADO DE TOLEDO. TOLEDO. ESPAÑA



The church has a length of 45 meters. © ARZOBISPADO DE TOLEDO. TOLEDO. ESPAÑA



Detail of the old pulpit inside the church. © ARZOBISPADO DE TOLEDO. TOLEDO. ESPAÑA